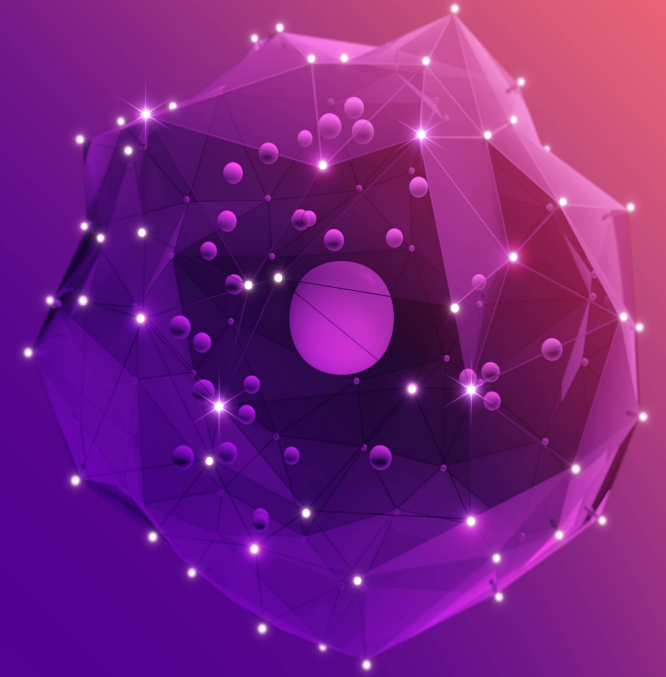


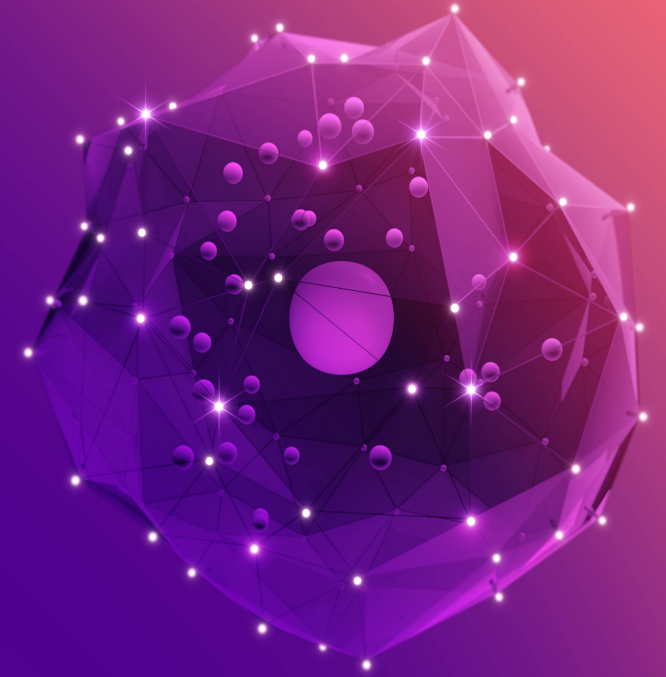
# Accelerating health innovation



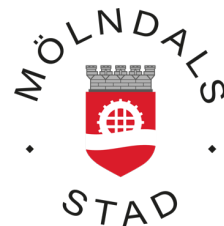
## SAHLGRENKA SCIENCE PARK

Annica Grimberg Lignell  
Director Business And Innovation  
Head of CO-AX and GROWTH

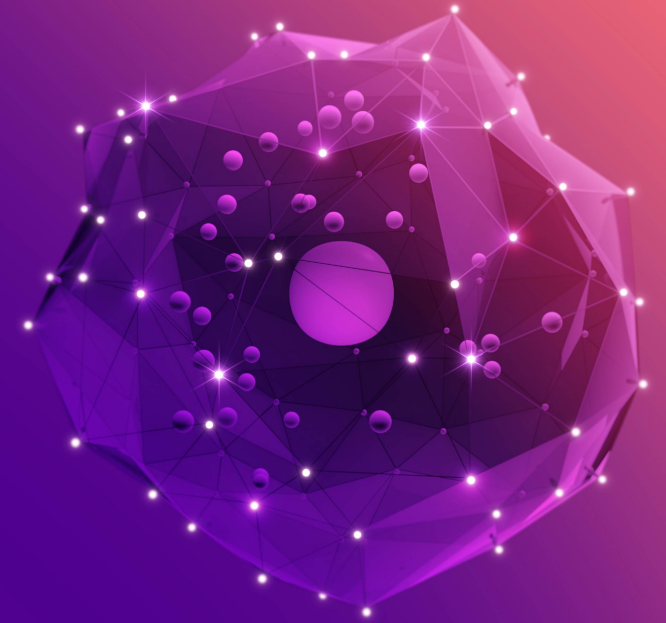
# Accelerating health innovation



## SAHLGRENKA SCIENCE PARK



# Accelerating health innovation



## **CO-AXC Accelerator and GROWTH**

Drives tech innovations addressing global health challenges



## **Offices and labs**

Develop environments for growth companies close to academia and health care



## **Meetings and events**

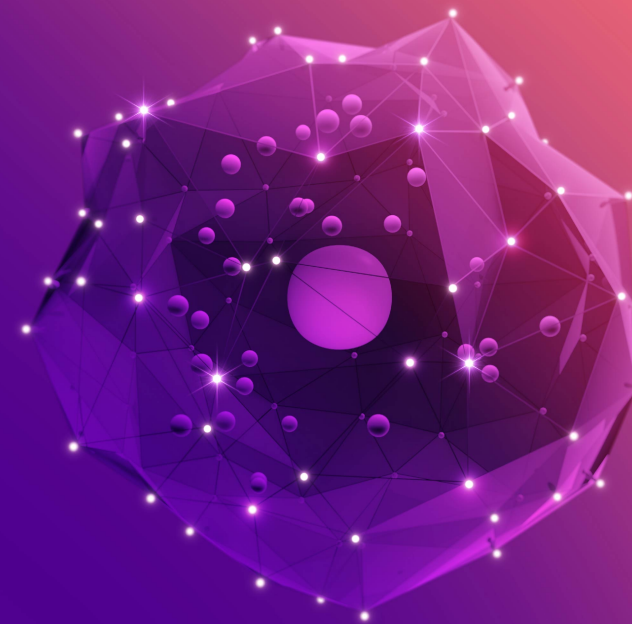
Collaboration for growth



## **Project partnership**

Collaborate on health challenges

# Accelerating health innovation



CEO

Cecilia Edebo



CONTROLLER

Konstantin Balashov



ASSISTANT

Monique Lindblom



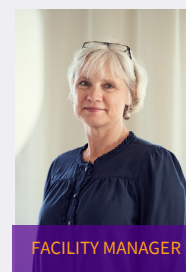
COMMUNICATIONS

Lizelotte Edvinsson



SITE DIRECTOR

Karl Maack



FACILITY MANAGER

Åsa Kjellberg



PROJECT LEAD

Josefin Klingvall



DIRECTOR  
HEAD OF CO-AX

Annica G. Lignell



MARKET ACCESS  
BUSINESS ADVISOR

Emma Hallenberg



INTEROPERABILITET  
BUSINESS ADVISOR

Petter Wolff



INTERNAT. RELATIONS  
BUSINESS ADVISOR

Emilia Hertzberg



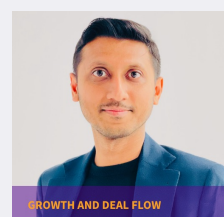
IP AND SOFT FUNDING  
BUSINESS ADVISOR

Göran Leonardsson



TEST AND VERIFICATION  
BUSINESS ADVISOR

Jessica Planefeldt



GROWTH AND DEAL FLOW

Siddhartha Khandelwal,  
PhD

+46760205391 / e-mail  
[Find out more](#)



DIGITAL MARKETING  
MEDIA / WEB

Emma Holm



COMPLIANCE/  
SUSTAINABILITY

Stefan Book



**> 20 000**

People work & study on a daily basis

**1 200**

Scientists

**8 000**

Students

**1 000**

Employees in companies & organisations

**1 250**

Employees in health organisations

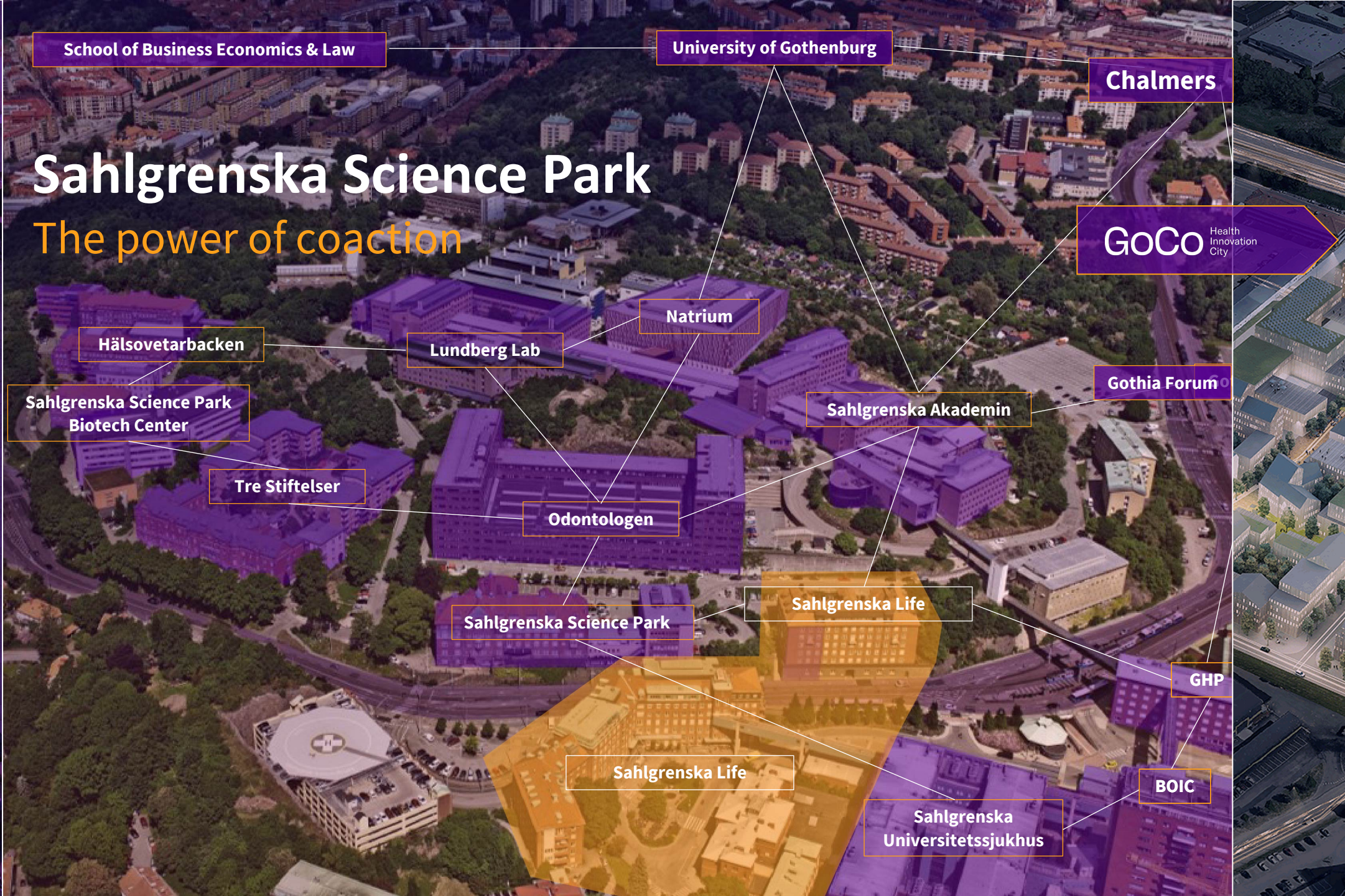
**300**

Employees in support organisations

Healthcare professionals and patient organisations

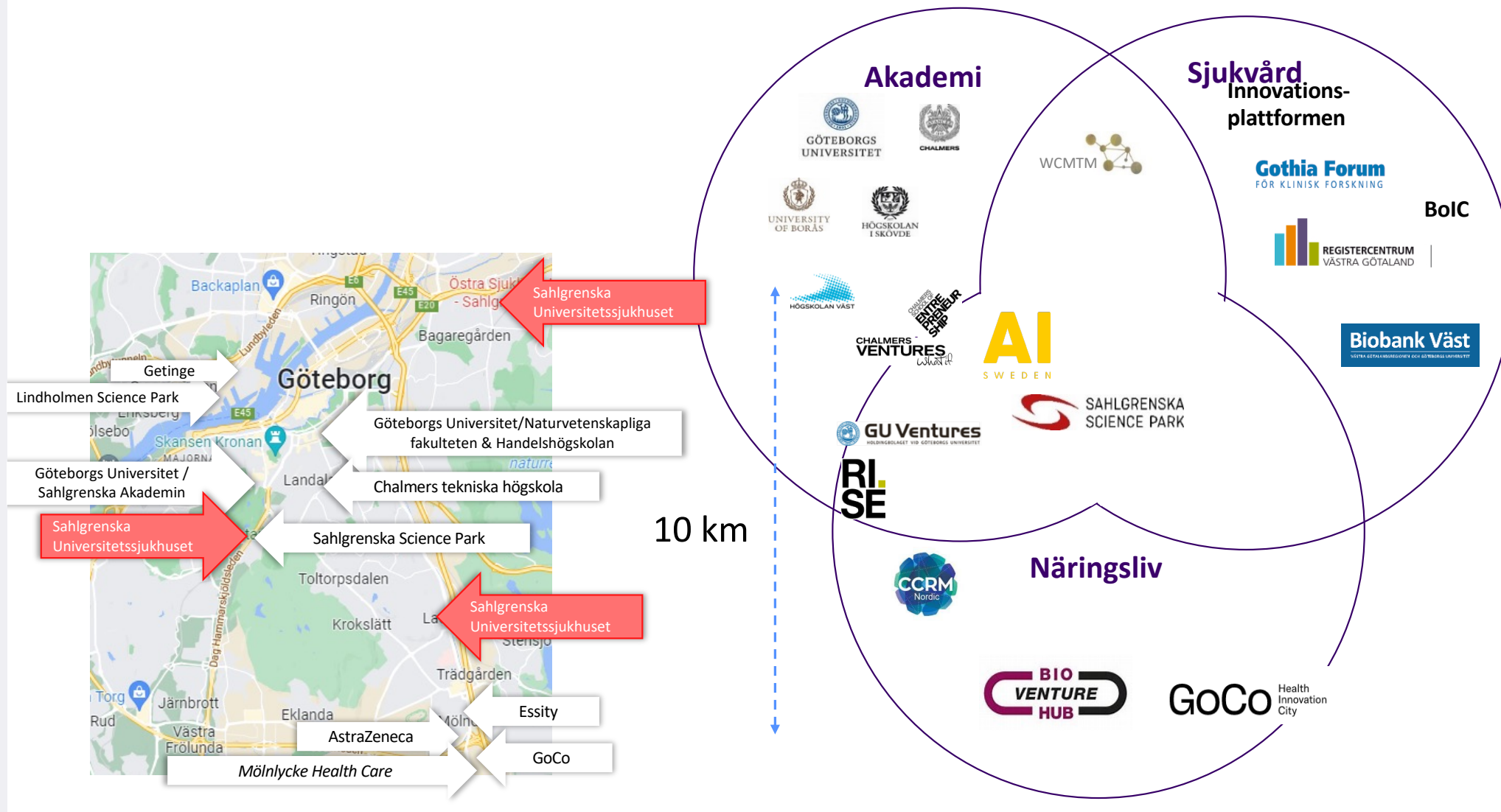
# Sahlgrenska Science Park

## The power of coaction



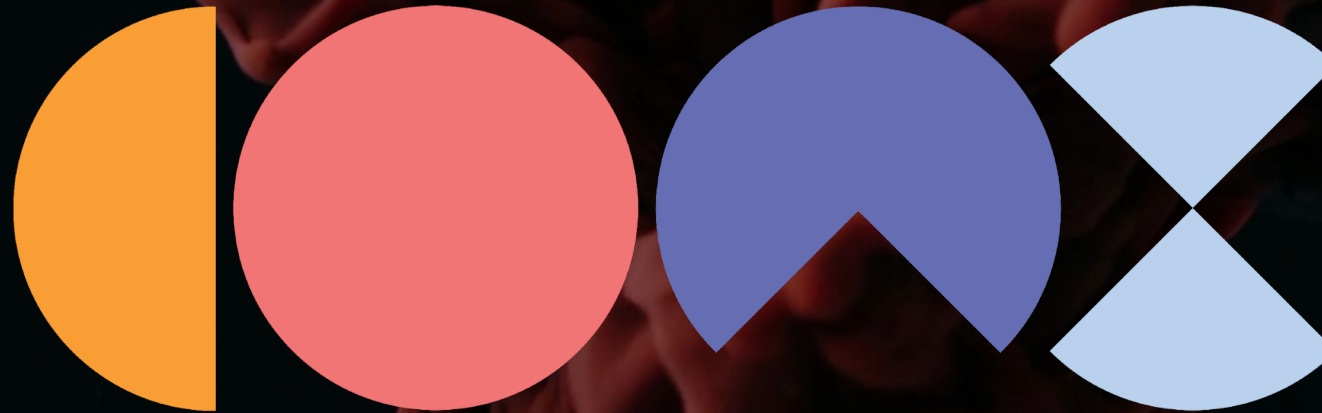
# Life Science in West Sweden

Source : Västra Götaland Region , Sweden





SAHLGRENKA  
SCIENCE PARK



# Accelerate Tech For Health

**+140  
COMPANIES**

**INTERNATIONAL  
FOCUS**

**ADDRESS GLOBAL  
HEALTH  
CHALLENGES**

**GROWTH IS  
CORE**

**+€ M 105**

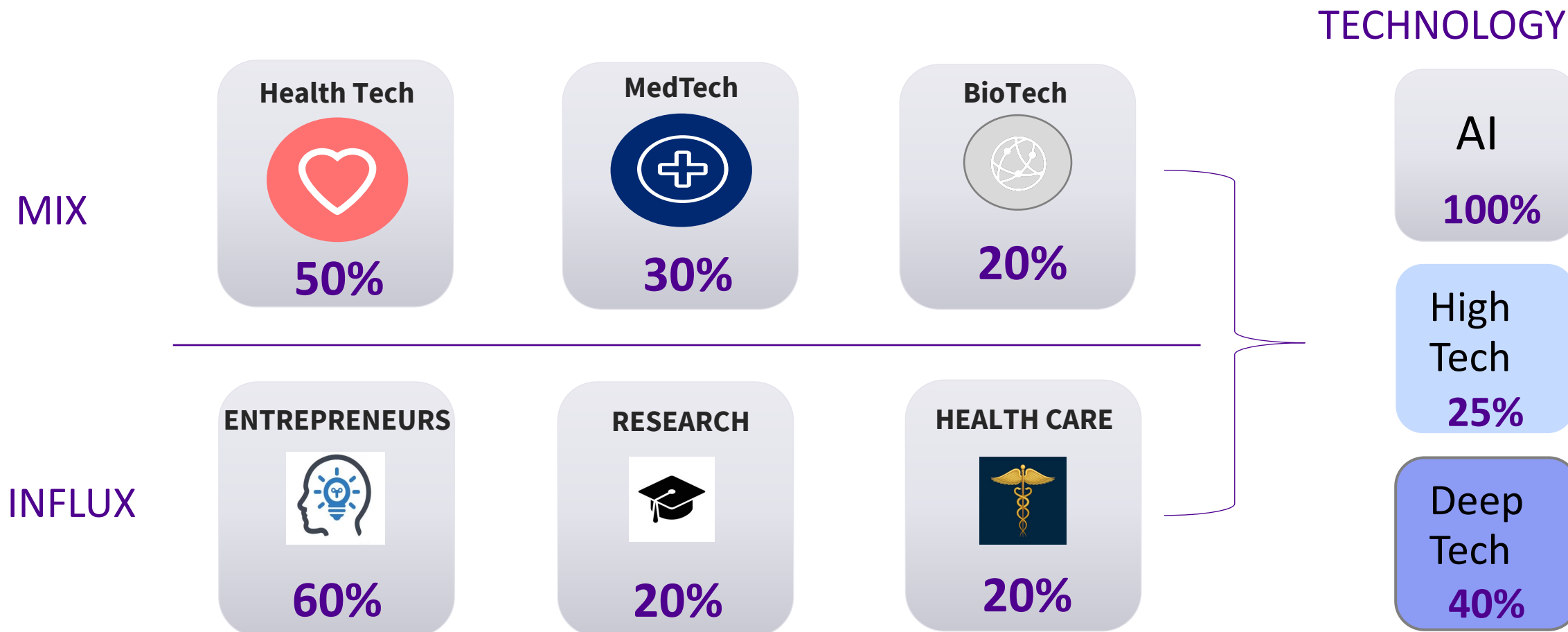
**40 % DEEP TECH**



CO-AX is Sahlgrenska Science Park's  
non-profit accelerator.

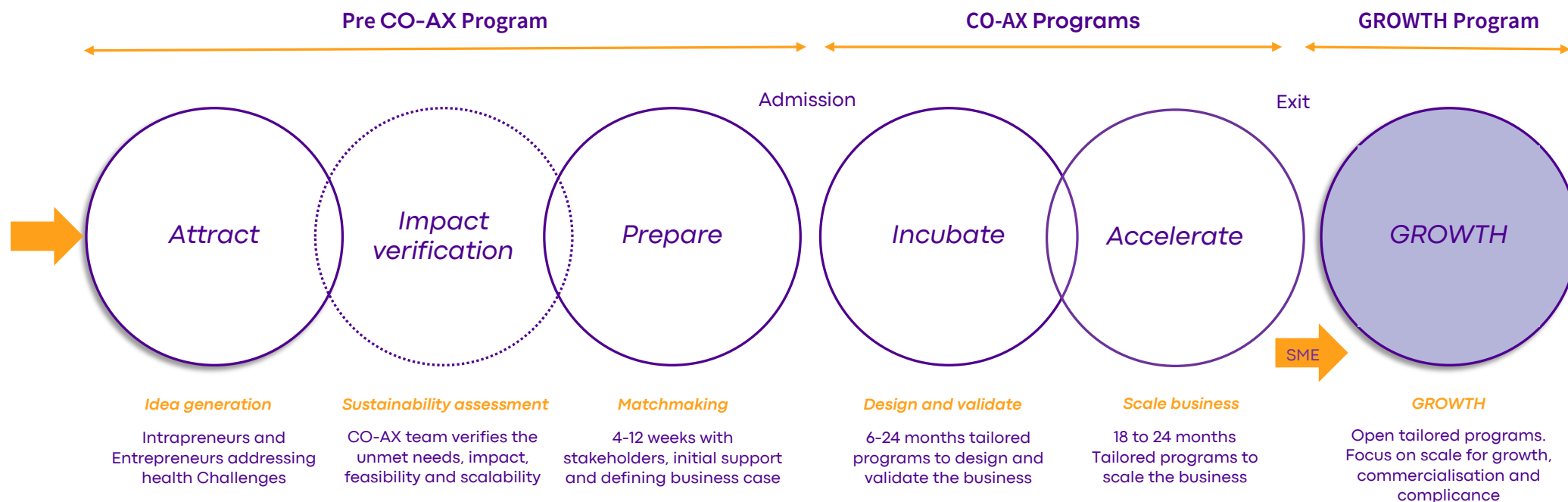


## Portfolio: 62 companies within programs 2023



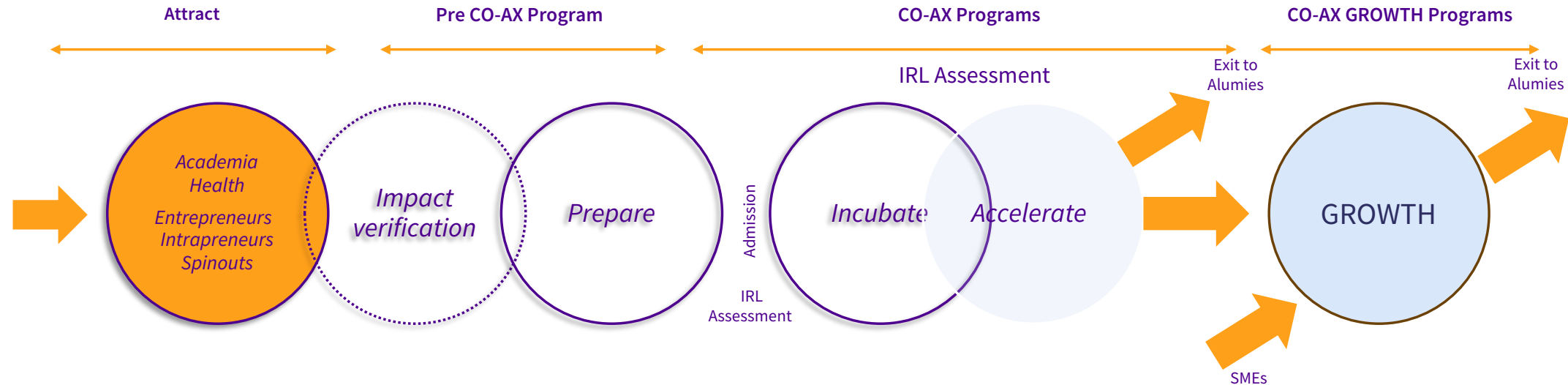
**Tech innovations addressing health challenges**

# OPTIMIZE EARLY OPPORTUNITIES - PROVIDE PROGRAMS FOR GROWTH



**Tech innovations addressing health challenges**

# PROVIDE EXPERTISE, GLOBAL NETWORK, EXPOSURE TO CAPITAL with international scaling first approach



## DEVELOPMENT

- Strategic and operational
- Product & service
- Business & concept
- Marketing & sales
- Cross Sector
- Interoperability

## ORGANISATION

- Company formation
- Recruitment
- Team building
- Management and board structure
- Mentors

## FUNCTIONS

- Sustainability
- IP/ Patents
- Compliance / MDR / FDR
- Branding, Communication
- Interoperability
- Health care
- Market access
- International Scaling

## INFRASTRUCTURE

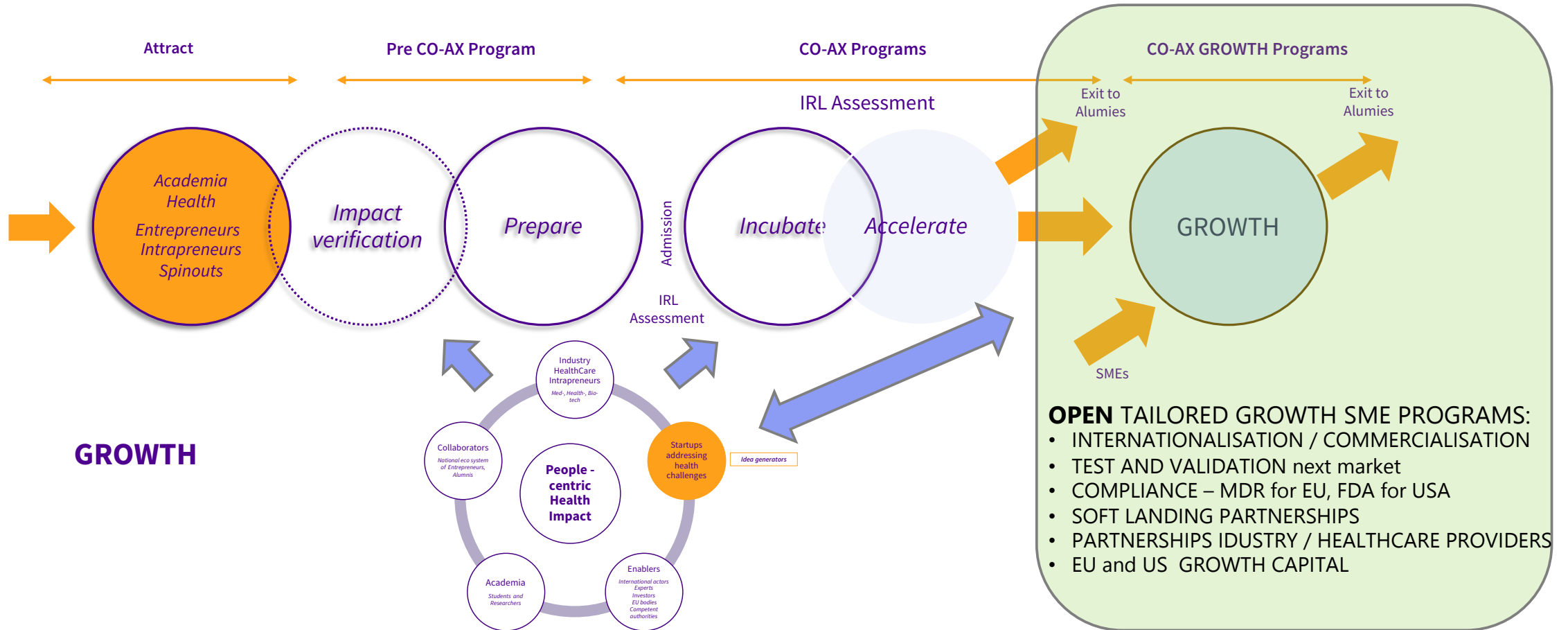
- Shared Co working
- Community
- Testbeds Nordics
- Health care providers
- Connection to industry
- Events & education
- Service provider network

## CAPITAL

- Investment readiness
- Investor network
- EU programs
- Grant support
- Loan opportunities

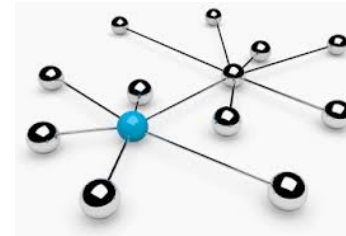
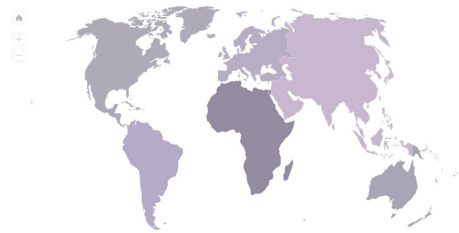
# GROWTH PROGRAMS WITH PARTNERS FOR SME'S GROWTH

## FOCUS ON ADVISORY, COMMERCIALISATION AND NEXT MARKET SOFT LANDING

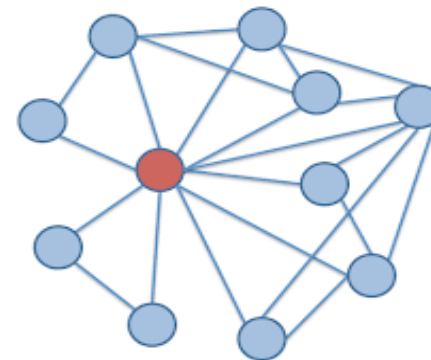
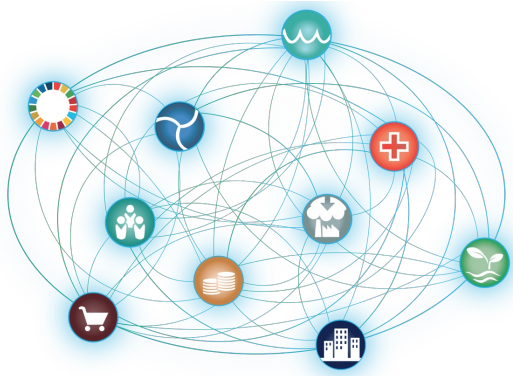


# CO-AX GROWTH – INTERNATIONAL PARTNERSHIP AND COLLABORATIONS

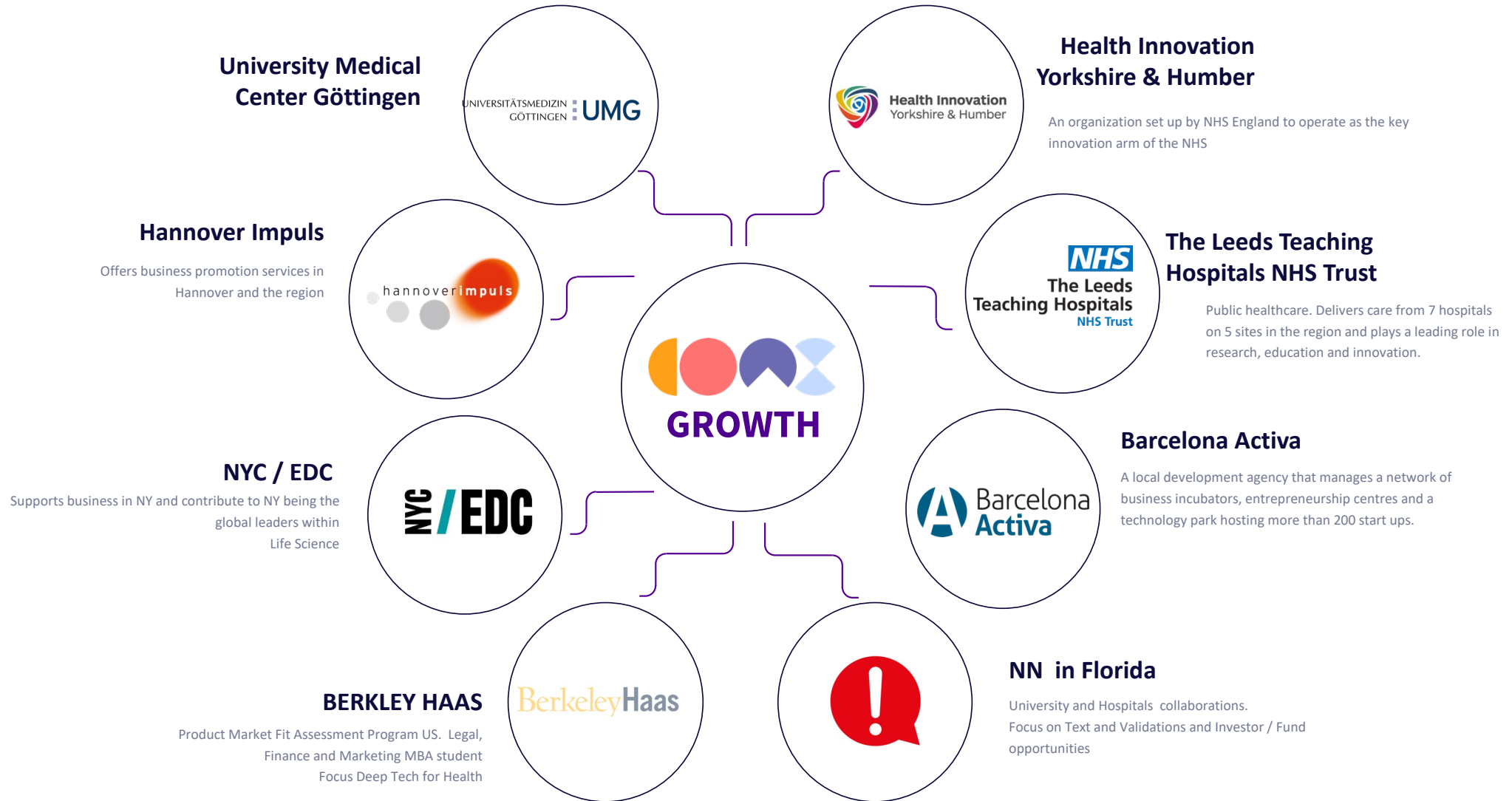
**Shifted from Free Market to Network Market**



**Network Market Emphasising on Insidership – Value creator**



# CO-AX GROWTH – INTERNATIONAL PARTNERSHIP AND COLLABORATIONS



# CO-AX GROWTH – Value the collaborations



UPPSALA INNOVATION CENTRE UMEA BIOTECH INCUBATOR  
lead GU Ventures Sting  
Karolinska Institutet Innovations AB MEDEON  
SAHLGRENSKA SCIENCE PARK SMILE

**Life Science Incubators of Sweden**

- +200 Life science Startups
- Learning platform
- Experts and Matchmaking
- Economic Association



innovatum science park BORÅS iNK FOUNDERS LOFT  
SCIENCE PARK SKÖVDE CHALMERS VENTURES  
SAHLGRENSKA SCIENCE PARK GU Ventures

**WEST SWEDISH INCUBATORS.**

- 8 tech focus areas for collaboration
- Cross industry development
- Improve efficiency and scaling
- Increase business opportunities



## Health Innovation Lab



CO-AX GROWTH - Open program SME's for Scale  
Shared Lab - business program  
Internationalisation and commercialisation  
Compliance , MDR and FDA readiness  
Test and verification

- Regional and National Collaboration and Partnership
- Synergies, opportunities and development

- Nordic, European collaboration and Partnership
- Ecosystem programs for Growth of companies
- Market Access , Test
- Capital



33 Catalysers– 14 destinations  
Swedish Health Tech Catalyser  
Go To Market Opportunities Nordics  
Industry Collaborations, HC providers



330 HealthTech StartUps  
Cross Nordic collaboration  
Focus on regional growth  
Europe's largest community



Consortium to support industry growth  
Nordic entry point for testing facilities  
Access to leading health institutions  
Node for West Swedish test beds

SAHLGRENSKA SCIENCE PARK IN COLLABORATION WITH AKADEMISKA HUS

# SHARED LAB

BY SAHLGRENSKA SCIENCE PARK

WITH A VISIONARY  
STATE OF MIND



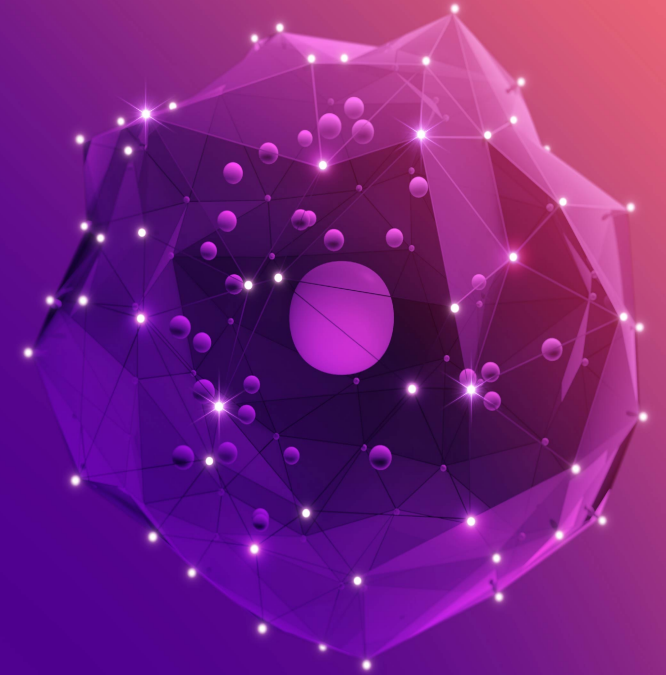


## WHAT YOU GET :

- ✓ Access to core facilities & resources
- ✓ Lab equipment and support to advanced research workflows
- ✓ Access to programs
- ✓ Connection to the Neighbourhood
- ✓ Steps from Gothenburg University, Chalmers and Sahlgrenska University Hospital
- ✓ Tram and bus stations close by and walking distance to Gothenburg city center
- ✓ Access to a vast international network
- ✓ Next door to research
- ✓ Seminars and networking events designed to bridge gaps and accelerate business



# Accelerating health innovation



SAHLGRENSKA SCIENCE PARK